

Automatic washbasin tap SLU 56B



SANELA 
we make water cool®

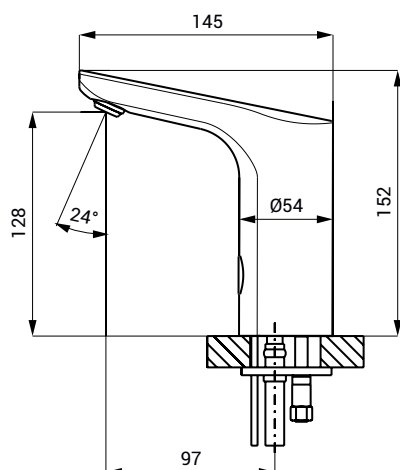


Characteristics



- includes Bluetooth control
(paid Sanela control app available for download)
- economical aerator, flow rate 6 l/min
- hygienic flush
- is designed for single-pipe supply of cold or pre-mixed water
- responds to the presence of hands in the sensing zone with immediate water activation
- water shuts off after hands are removed and the set time elapses (can be set in the range 0.25 – 7.75 s)
- safety function: water shut-off after 5 minutes
- battery status monitoring
- option to switch to START/STOP mode
- parameter settings and communication with the electronics via Sanela control application (Bluetooth) or remote control SLD 03

Dimensions



Technical Specification

Dimensions	152 x 145 mm
Weight	1,62 kg
Operating voltage	6 V
Power input	3 W
Battery life	
▪ 4 pcs AA alkaline batteries 1.5 V, 2700 mAh	approx. 2 years (with 100 activations per day)
Range	
▪ standard	0,13 - 0,19 m
▪ in START/STOP mode	0,05 - 0,15 m
Recommended working pressure	0.1 - 0.6 MPa
Flow rate	6 l/min. (inf. data)
Water inlet	external thread G 1/2"

Supply Specification

SLU 56B - Supply No. 03565

tap body including Bluetooth module, with electronics, solenoid valve (1 pc), connecting hose, 4 pcs AA alkaline batteries 1.5 V, 2700 mAh with case

Recommended accessories

SLD 03 - Supply No. 07030
SLT 04 - Supply No. 09040
SLT 05 - Supply No. 09050
SLA 36 - Supply No. 06360
SLA 55A - Supply No. 06550
SLA 55B - Supply No. 06551
SANELA CONTROL APP

remote control for an adjustment of parameters
thermostatic valve 3/4", flow rate 28 l/min at 0.1 MPa pressure
thermostatic valve 1/2", flow rate 42 l/min at 0.1 MPa pressure
set of 4 AA alkaline batteries, 1.5 V, 2700 mAh
water-saving aerator 3.8 l/min
water-saving aerator 1.9 l/min
paid Sanela control application available for download on the App Store and Google Play